

Text Features

Non-fiction texts are very complex and filled with a lot of information. Text features are used to help organize information, describe it, and make it easier to understand. There are many different types of text features.

Vocabulary

Text Features	Any tool used to make reading a text more efficient.
Table of Contents	A list of topics separated by their page numbers.
Glossary	A list of important words along with their definitions.
Index	A list of specific words and the page numbers they appear.
Captions	Information attached to a picture to describe it.
Accented words	Important words that are bold , <i>italicized</i> , or <u>underlined</u> to draw your attention.
Diagram	A scientific picture that describes the parts of something.
Charts and Maps	These show data in number or picture forms or specific places in the world.

Table of Contents

German Culture	2
German Foods	6
German Holidays	12
German Movies	14

1. What page would you most likely be able to find information about German cake?

2. What would you most likely learn about on page 5? _____

3. How many pages of this book cover German holidays? _____

Glossary

Adapts	To change to survive.
Retract	To draw in or pull back.
Toxic	Poisonous.
Vertebrate	An animal with a backbone.

1. Which word from the glossary could be used to describe a **dog**? _____

2. Which word from the glossary could be used to describe black widow spiders? _____

3. Which word would you use to explain why some frogs change color? _____

Index

Amber	1, 12, 24
Extinction	2, 3, 18
Fossil	7, 8, 12, 20
Tectonic	12, 18, 19
Tsunamis	16, 17

1. On what pages can you find information on tsunamis? _____

2. What words can you find on page 12?

3. What words can you find of page 18?

Text Features

Captions



Trains are one of the most efficient forms of transportation.

1. What type of book would you find this picture in? _____

2. What is the caption trying to teach us about trains? _____

Accented Words

When it comes to **manufacturing** goods, there are many things to keep in mind. *Factories* run by either humans or machines build things that people need. These people are called consumers.

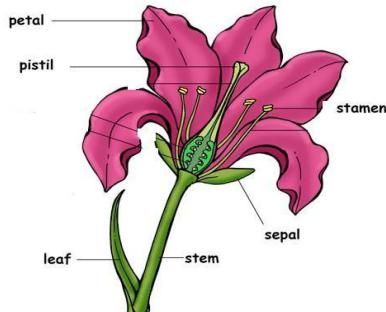
1. The bold word is _____.
It means _____.

2. The italicized word is _____.
It means _____.

3. The underlined word is _____.
It means _____.

Diagram

The Parts of the Flower



1. How many parts of a flower are shown in this diagram? _____

2. How many petals does the flower have?

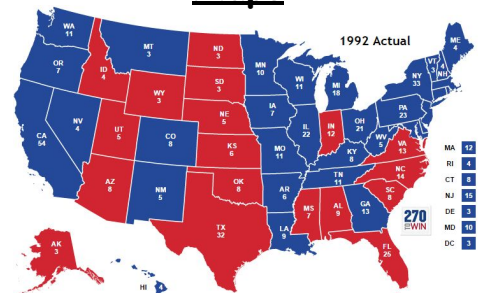
3. The leaf is attached to what part of the flower? _____

Charts

Method of Travelling	Number of children
Walking	8
Car	9
Bus	4
Cycle	5
Train	1
Taxi	3

1. What is the most popular method of travel?

Maps



1. What country is the map showing?